

Operation Manual

PHOTO STUDIO DELUXE



THIS OPERATION MANUAL IS IMPORTANT TO YOU.
PLEASE READ IT BEFORE ASSEMBLING AND USING YOUR PHOTO STUDIO DELUXE.

Disclaimer

- ***Included USB drive is loaded with restore software.***
- ***DO NOT use it for file transfers***



- ***We recommend having a keyboard and mouse handy for quicker configuration***



Configuration

With the Photo Studio software you can quickly navigate through the onscreen guide to change the software configurations with the touch screen

- **Entering the configuration and adjustment utility**

When you turn on your PhotoBooth for the first time, it will automatically load the feature mode of your PhotoBooth called "attract mode." ("Attract mode" is the only software mode accessible to PhotoBooth customers).

At any point while "attract mode" is playing, operators can quickly enter a secure Configuration and Adjustment Utility by simply tapping the six o'clock position repeatedly, displaying a keypad in the middle of the screen.



Key Point: To enter configuration mode, simply tap the 6:00 position repeatedly. A keypad will appear.

For security purposes, once the keypad has appeared, operators are prompted to input an access code to enter one of three different modes within configuration utility:

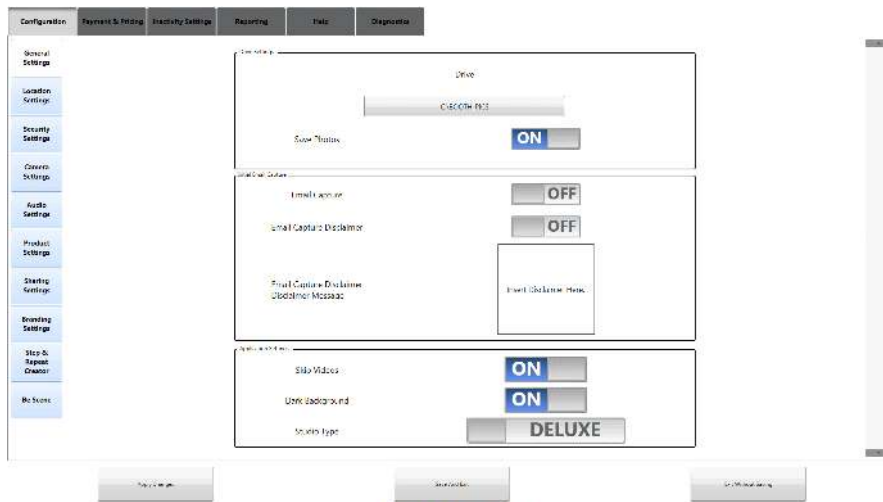


Configuration:

Allows full access to the configuration and adjustment utility.

* Default Access Code: 1-2-3-4-5, followed by "OK"

● **General Settings**



Drive Setting

- Set Default drive where pictures will be saved. Options are D:\ (USB Drive), BOOTH_PICS Folder on computer or Dropbox folder.
- Save Photos On/Off tab – Enables and disables photo saving

Initial Email Capture

- Email Capture On/Off tab – Enables and disables email capture option.
- Email Capture Disclaimer On/Off tab - Enables and disables whether the disclaimer shows.
- Email Capture Message – Text that will be displayed when user presses disclaimer button.

Application Settings

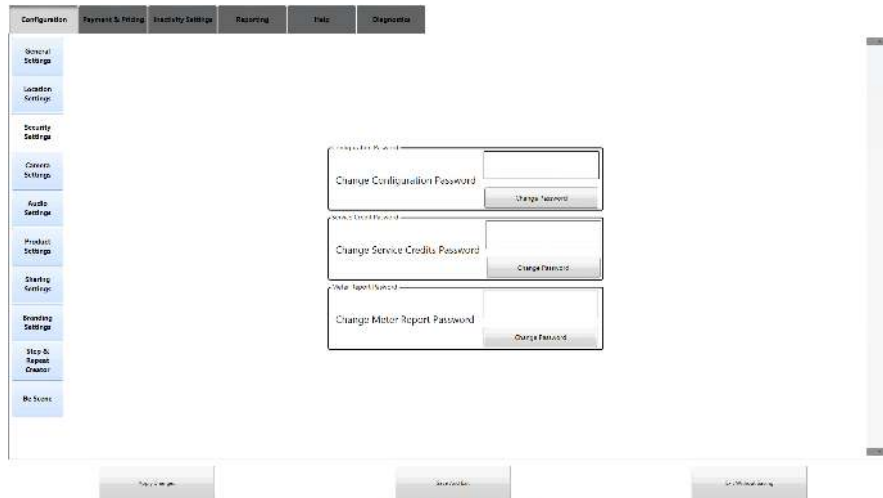
- Skip Videos – Enables and disables videos before and after taking photos.
- Dark Background - Change between white and black UI background.
- Studio Type – Choose between Photo Studio & Photo Studio Deluxe.

• Location Settings

- Location Information
- Operator Information
- Collection Details / Fees

- Set Date, Time & Time Zone

• Security Settings



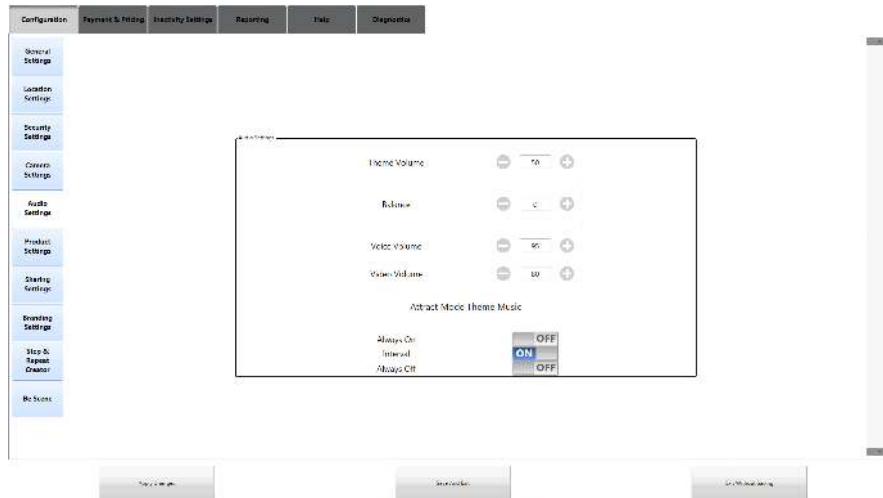
- Configuration Password – Change password to gain access to configuration application.
- Service Credit Password - Change password to gain access to service credits.
- Meter Report Password - Change password to gain access to meter reports.

• Camera Settings



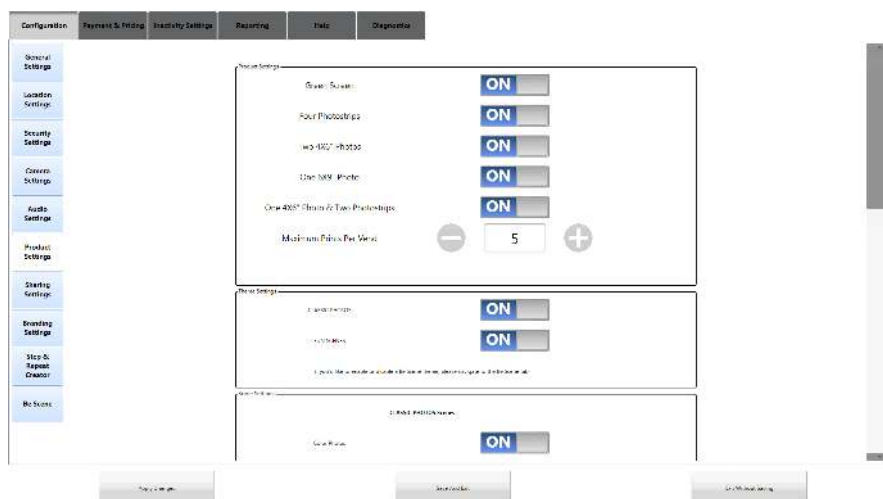
- Displays Camera, On/Off tab for flipping Video and values for Brightness, Saturation, Zoom, Contrast, Lows and Highs

• Audio Settings



- Ability to change the volumes of Theme Song.
- Main volume control located inside the cabinet amplifier.
- Ability to change voice command volume.
- Ability to change video volume.
- Attract Mode Theme Music - ability to change attract theme song intervals.

• Products Settings



Product Settings

- Green Screen - toggles between green screen being off and on
- Ability to turn off and on certain photo packages
- Maximum prints per vend - Enables cap on prints per user

Theme Settings

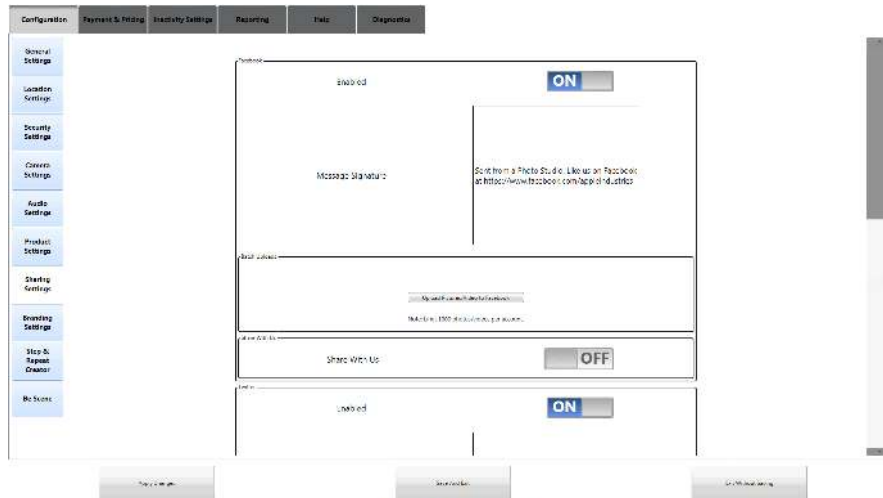
- Toggle Classic Photos & Fun Scenes on and off

Scene Settings

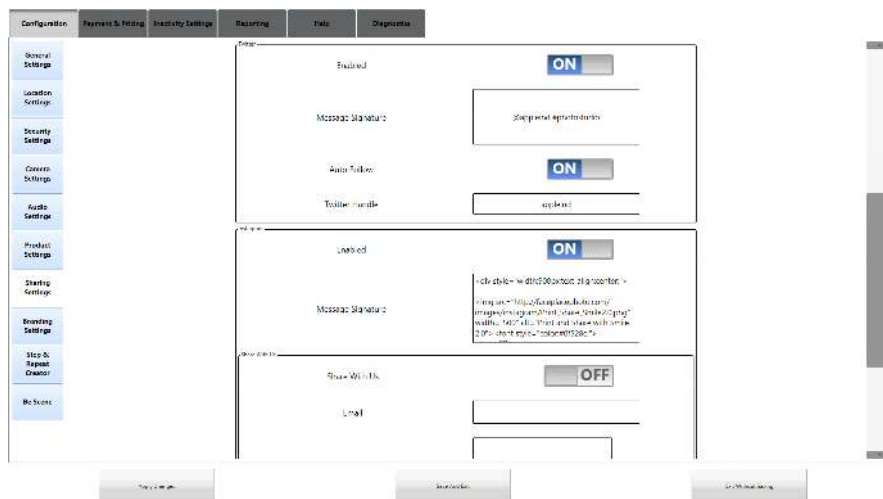
- Toggle sequences on/off



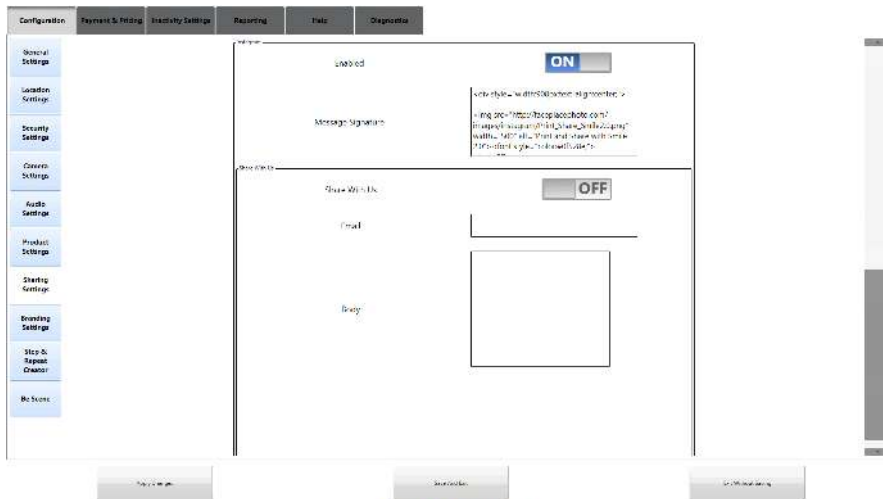
● **Sharing Settings**



- Facebook – On/off tab to enable and disable sharing to facebook. Facebook button will be invisible if disabled.
- Facebook Message signature – Text that will be posted with facebook picture that is shared.
- Batch uploads – allows user to upload multiple photos to their facebook account.
- Facebook Share With Us – On off tab disables and enables share with us option. If on, will send picture taken to facebook account associated with the inputted operator. Post will have caption that is inputted in Share with us caption section.



- Twitter – On/Off tab to enable and disable sharing to twitter. Twitter button will be invisible if disabled.
- Message signature – message that will be displayed when shared to twitter.
- Auto Follow On/Off tab – automatically follows twitter handle that is inputted if they share to twitter.
- Instagram - On/Off tab to enable and disable sharing to email. Email button will be invisible if disabled.
- Instagram - Message signature send email with uploading instructions to customer.
- Email Share with Us – On/Off tab disables and enables share with us option. If on, will send picture taken to email inputted by operator. Email body will include text inputted in Body text box.



• **Branding Settings**



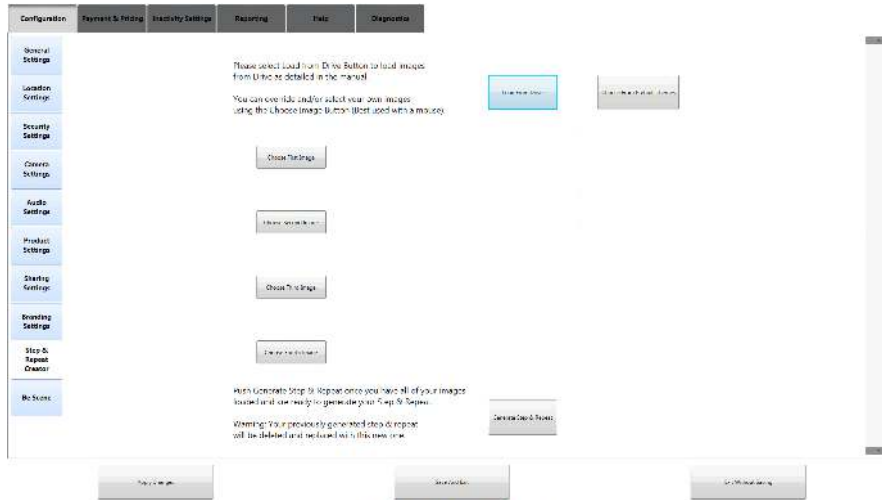


- Learn about creating & loading your own branding artwork in the Custom Artwork Section
- 4th frame logos can be loaded to occupy the last frame of the photostrip. You can load up to four.
- You can turn logos off, only have a single one, cycle in order between the four or have them print in a random order.

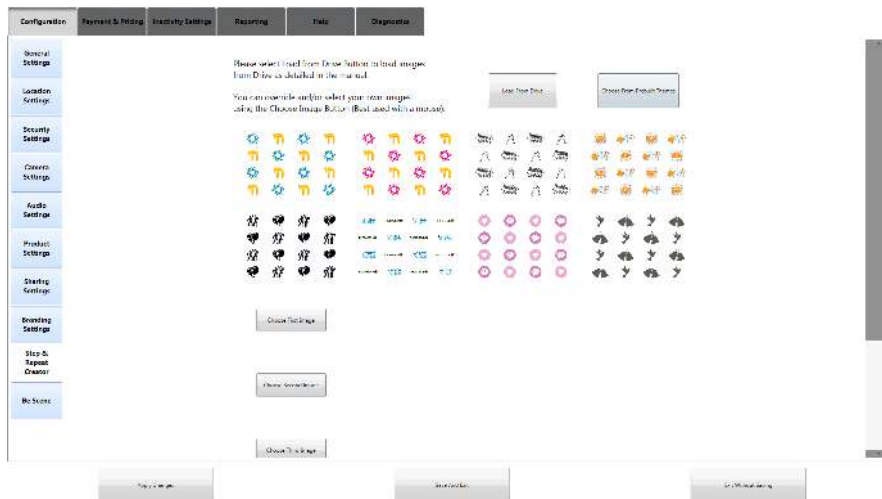
- **One-Step, Step & Repeat Generator**

- Multiple options for uploading custom step and repeat.

- **1. Choose from Prebuilt**



- Click one of them and the step and repeat will be generated and loaded as the background of be scene and classic photos.

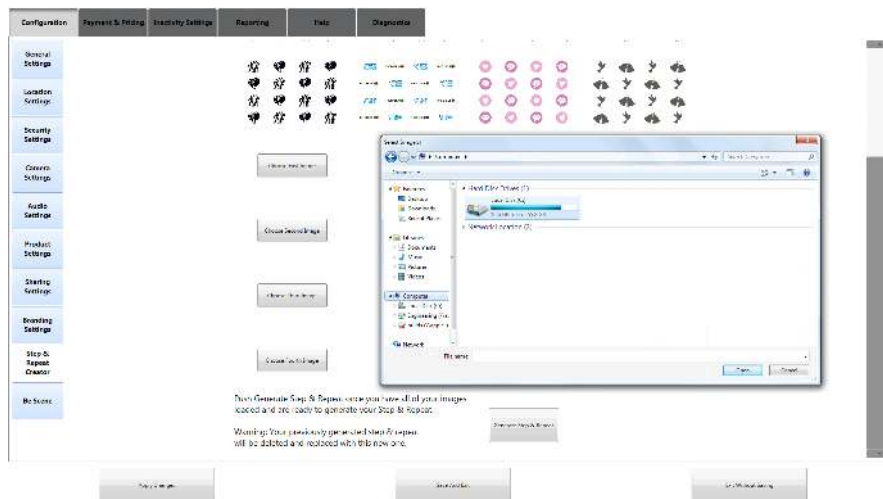


- **2. Load from Drive**

- Loading from drive button automatically loads images from the Default Drive that they have selected in the General Settings tab (D:\ (USB Drive), BOOTH_PICS Folder on computer or Dropbox folder). Images must be named "SR1.png" "SR2.png" "SR3.png" or "SR4.png". No other file type will work, only PNG's. Again must be labeled SR1... SR4 or nothing will happen when hitting the button. They can upload any amount of images from 1-4, so it's not mandatory to load all 4. Select generate step & repeat once images are loaded. Custom step & repeat will be the background for Be Scene & Classic Photos.

- **3. Manually Choose Images**

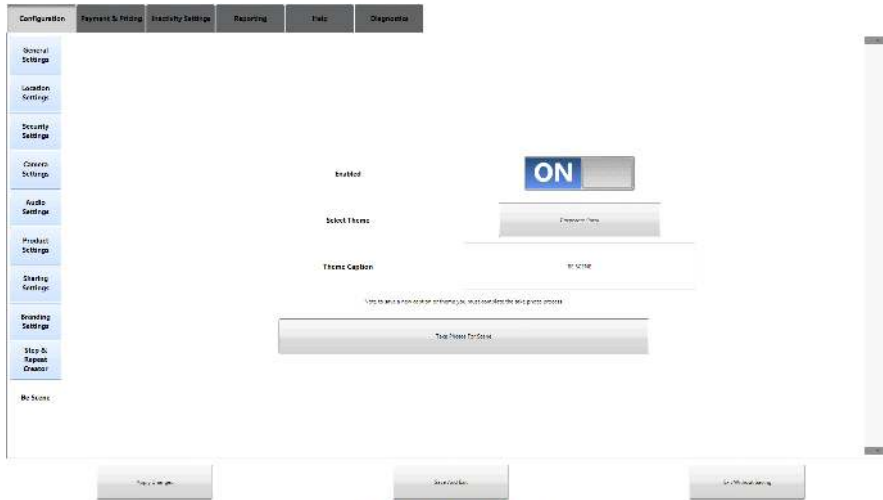
- Manually choosing your images. Hitting any of the "choose your XXX image" buttons will open up the browse window to your Default Drive that is selected in the General Settings. But they can browse to any location on the computer if they put their pictures somewhere else.



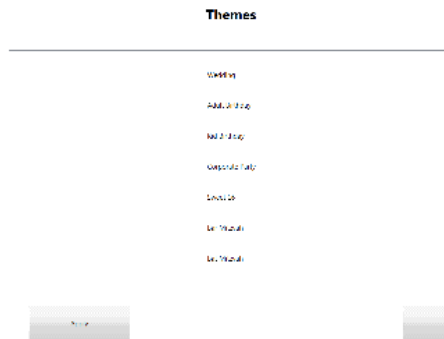
- Once they have their desired logos loaded, they can now hit generate step and repeat and the custom step and repeat will be shown as well as load as the background of be scene and classic.
- Save and exit and done.

- **Be Scene**

- To create a custom be scene, start by enabling the on/off tab

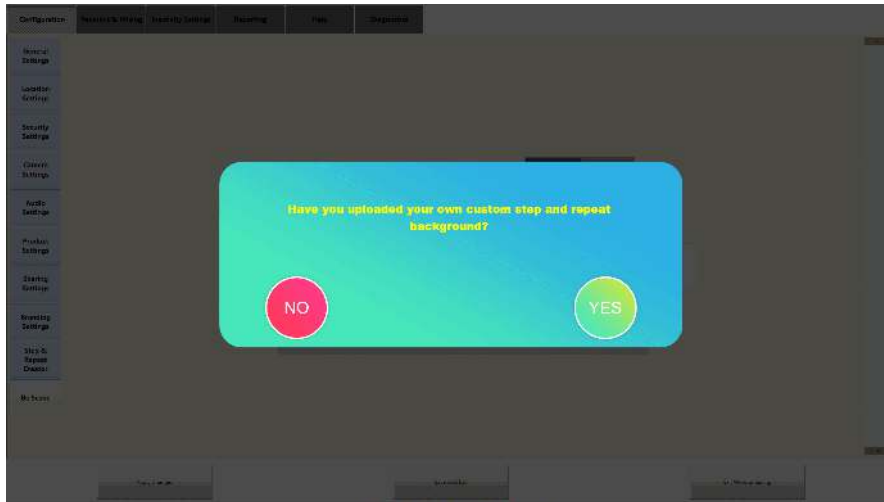


- Then select a theme and select APPLY

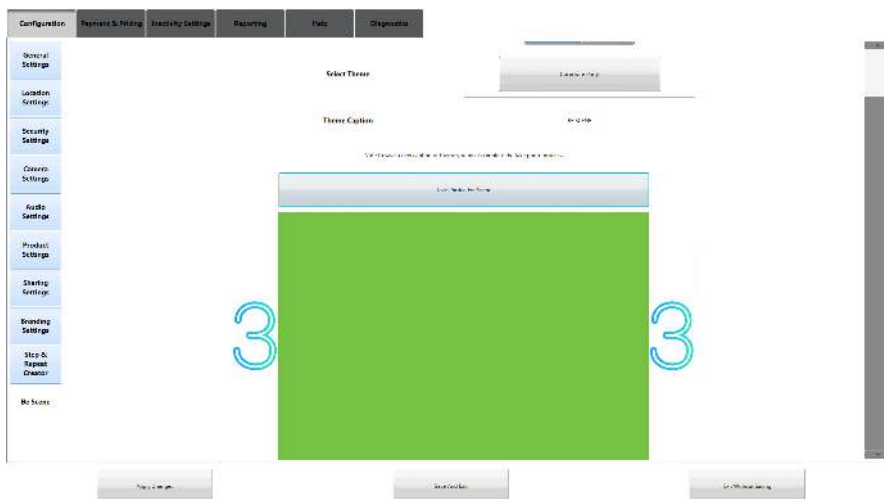


- Type in a caption in the theme caption box that you would like to be displayed on the button under Fun Scenes and Classic as well as the scene icon after the button is selected.

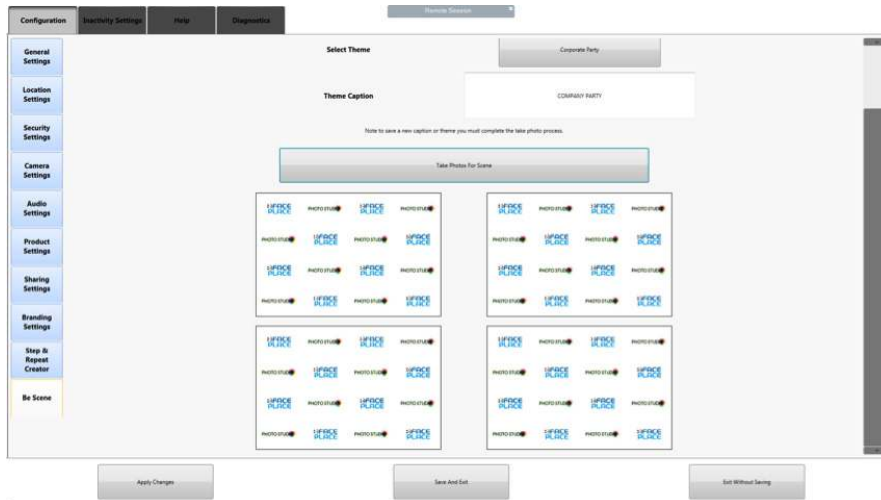
- After that has been inputted you can now select take photos for the scene and a pop up will ask if you've uploaded your own custom repeat image. If you haven't and want to you can select NO and it will take you to the Step and Repeat creator tab, otherwise there is a default one provided for you



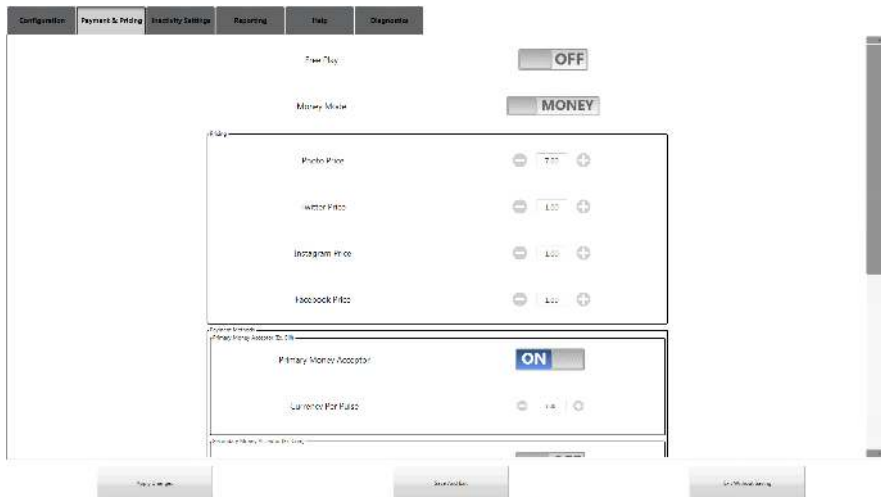
- Whomever is the "star" of the be scene sequence will now take their 4 photos. They will be prompted to pose the same as their guest.



- Once done it will display all four photos taken. If you would like to retake the pictures, simply press the Take photos for Scene button again, otherwise you can save and exit and your be scene is ready



Payment & Pricing Tab



- Free Play - Toggle free play on/off.
- Money Mode - Toggle credits or cash payments.

Pricing

- Set Prices for Photos.
- Set Prices for Sharing Options.

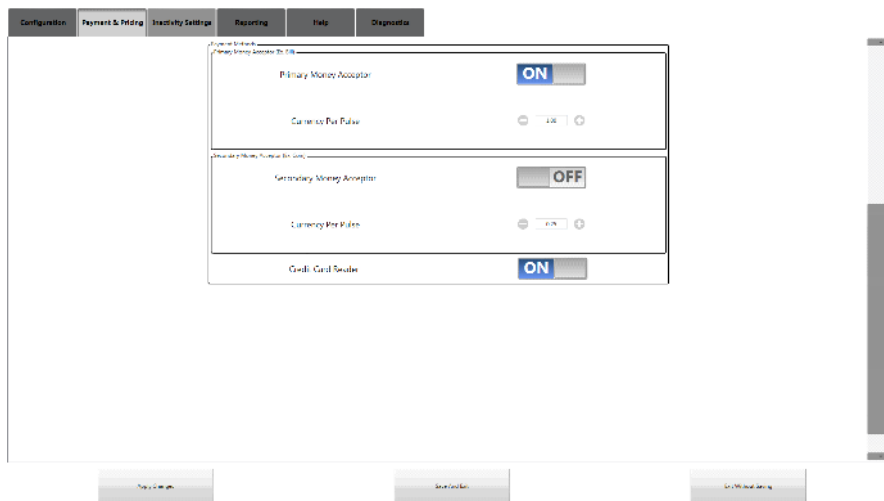
Money Payment Methods Primary Money Acceptor (Ex. BILL)

- Toggle cash payment on/off.
- Set currency pulse.

Money Payment Methods Secondary Money Acceptor (Ex. Coin)

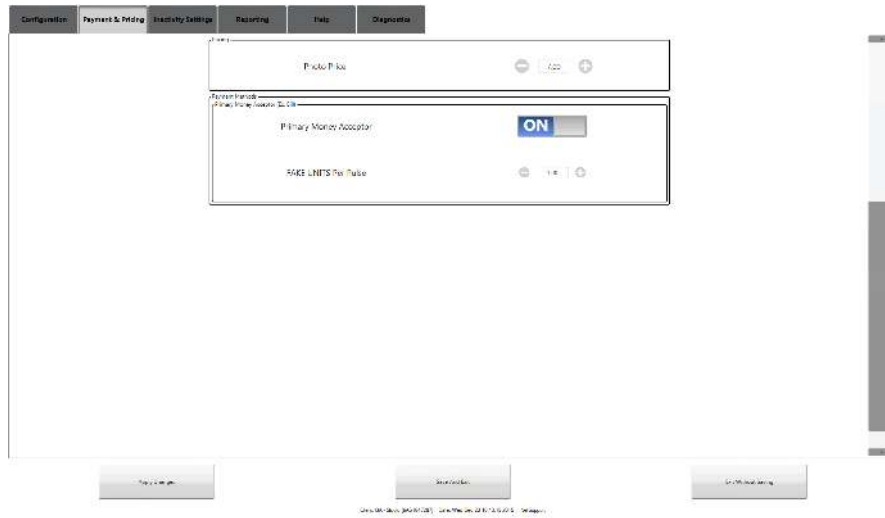
- Toggle secondary payment on/off.

Toggle Credit card reader on/off

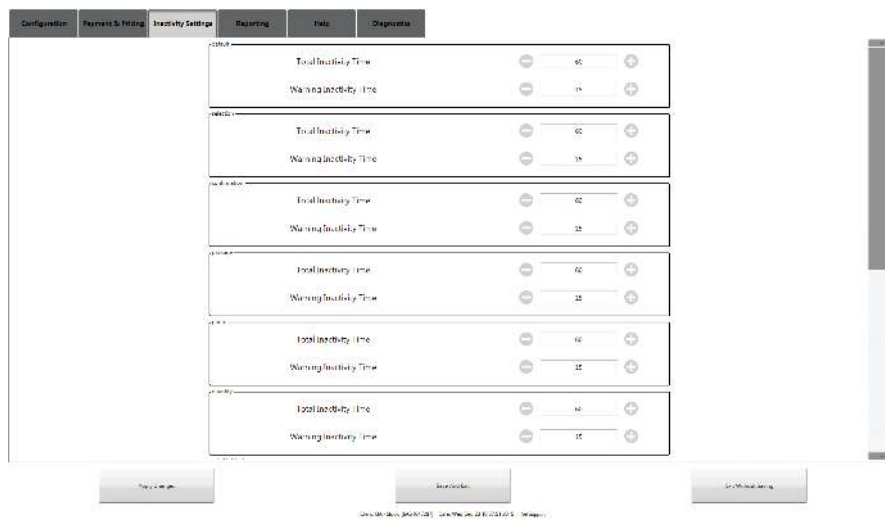


Points Payment Methods Primary Money Acceptor (Ex. BILL)

- Set FAKE currency pulses for cards

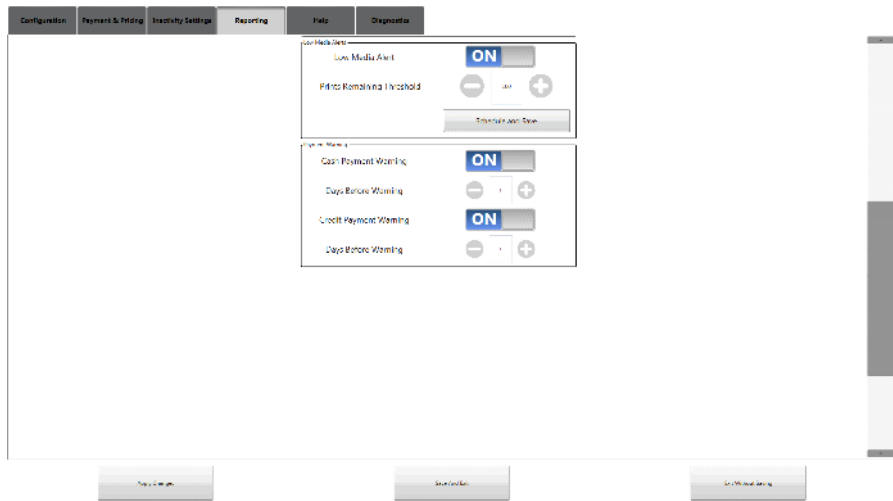
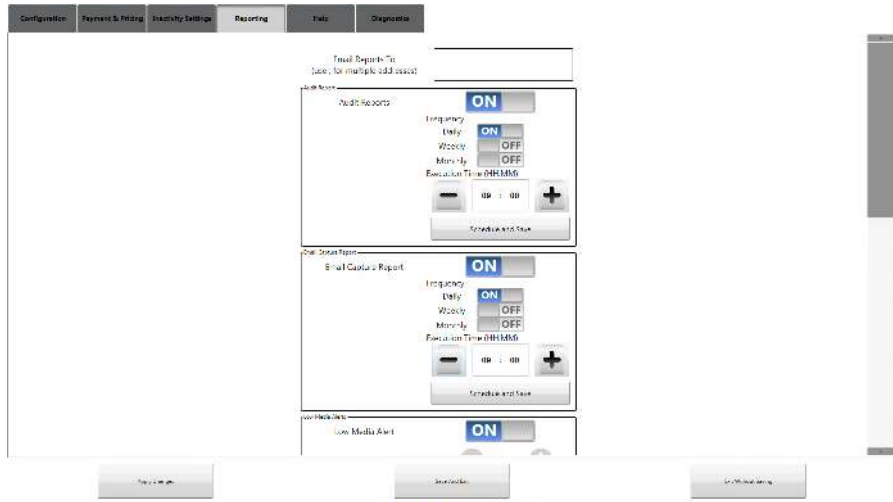


Inactivity Settings Tab

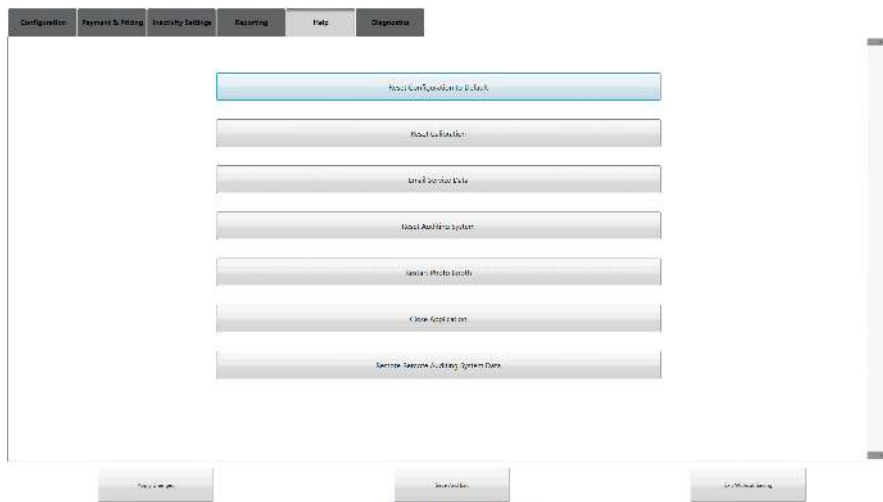


- For each section of the Photo Studio you can set the timeout.
- Total inactivity time - the amount of time until the warning is shown.
- Warning inactivity time - how long the warning count down is.
- Default is 60 seconds then then a 15 second warning countdown then it timeouts to the attract mode.

Reporting

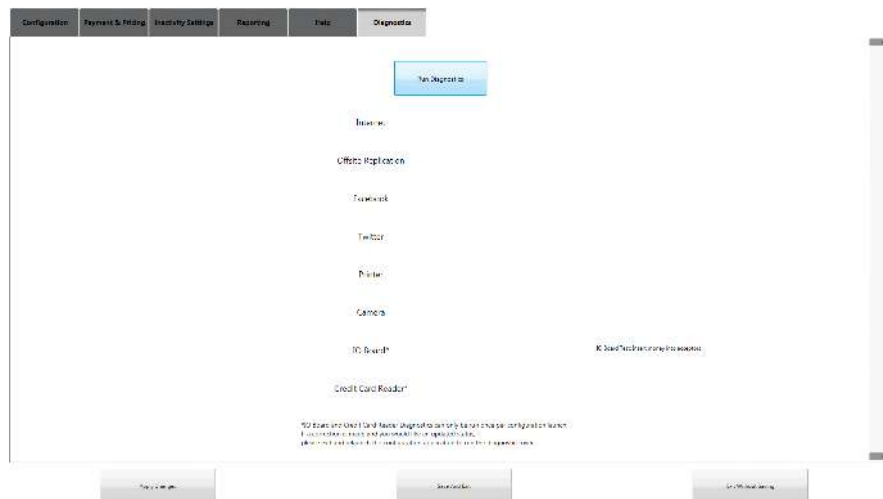


Help Tab



- Reset Configuration to Default button – resets all config values to default.
- Reset Calibration button – opens the calibration for the touch screen.
- Email Service data button – emails all config files and logs to support.
- Reset Auditing System - resets system earnings to 0.
- Restart Photobooth button – restarts the computer.
- Close application button - closes the configuration app and goes to the desktop.
- Restore Remote Auditing System Data - restores systems earnings after computer restore.

Diagnostics Tab



- Run Diagnostics button runs diagnostics which gives the status of all items listed.

Adjusting PhotoShoot Countdown Length

At any point while "attract mode" is playing, tap the six o'clock position on the monitor.

Hit ALT and F4 keys at the same time on the Keyboard to close the PhotoStudio Application.

1. Click the windows button located on the bottom left side of the desktop.
2. Click Computer
3. Click Local Disk (C:)
4. Click the PHOTOSTUDIO folder
5. Click the Scripts folder
6. Click the en-US folder
7. Right-click "TakePicture.xml" and select edit.
8. To add a countdown longer than 3 seconds, add a new line for each second above the 3 line with the same attributes as seen for the 1, 2 and 3 changing only where the X is located in the template. Make sure to leave duration and middle the same and do not get rid of the <Script> tags. Note: Max countdown is 9 seconds.

Template: <Message text="PhotoStudio_Countdown_0X.png" duration="1.5" middle="true" audio="Audio\X.wav" />

Example Countdown from 5:

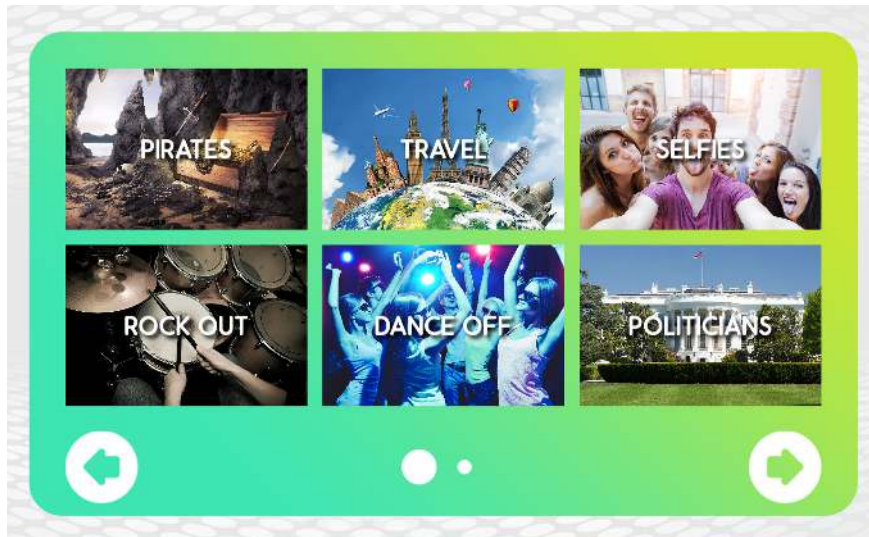
```
<Script description="Preparation Mode for a Single Unknown Face">
<Message text="PhotoStudio_Countdown_05.png" duration="1.5" middle="true"
audio="Audio\5.wav" />
<Message text="PhotoStudio_Countdown_04.png" duration="1.5" middle="true"
audio="Audio\4.wav" />
<Message text="PhotoStudio_Countdown_03.png" duration="1.5" middle="true"
audio="Audio\3.wav" />
<Message text="PhotoStudio_Countdown_02.png" duration="1.5" middle="true"
audio="Audio\2.wav" />
<Message text="PhotoStudio_Countdown_01.png" duration="1.5" middle="true"
audio="Audio\1.wav" />
</Script>
```

9. Once you are done editing, select file and save. You may now close everything and start up the Photostudio app.

Custom Sequences

- **What Are They?**

A Sequence is a journey the customer will select to take four photos. It consist of a pre-photo shoot video, four pose guided photos & lastly a post-photo shoot video. You will need to supply all of the content for a custom sequence to work correctly.



Example of Sequences

- **Sequence Title Image Background**

The Title Image is the first thing the customer will see to possibly choose the sequence as seen above.

The image requirements are as follows for setting up the sequence title image background. The title will be applied through software settings.

	Sequence Title Image
File Type	JPEG
Color	RGB
Transparency Layer	NO
Resolution	1500 x 1000
Filename	customsequencename.png



Example of Sequence Title Image

● **Custom Pre/Post Photo Shoot Videos**

We suggest the Pre Photo Shoot video should be around 20 seconds and Post Photo Shoot video around 10 seconds.

The video requirements are as follows

	Photo Shoot Videos
File Type	MP4
Color	RGB
Compression	H.264, AAC
Resolution	1920x1080
Filename	customsequencename_01-02. mp4



Example images from our videos

● **Custom Sequence Scenes**

Whenever the customer is taking their photos with the help of Green Screen technology the software places them “into” the scene. This works with a background image and a foreground image. The customer is then placed between the two to create an immersive photo. The Background is a flat image with no transparencies. The Foreground needs a transparent layer to successfully create the effect. Before taking their photo you will also need an example image that shows the foreground and background combined with text telling the customer how to pose.

The background image requirements are as follows

	Scene Backgrounds
File Type	PNG
Color	RGB
Transparency Layer	NO
Resolution	1500 x 1000
Filename	customsequencename_BG_01-04.png



Example of Scene Background

The foreground image requirements are as follows

	Scene Foregrounds
File Type	PNG
Color	RGB
Transparency Layer	YES
Resolution	1500 x 1000
Filename	customsequencename_FG_01-04.png



Example of Scene Foreground

The example image requirements are as follows

	Scene Foregrounds
File Type	PNG
Color	RGB
Transparency Layer	NO
Resolution	1500 x 1000
Filename	customsequencename_EX_01-04.png



Example of Scene Example

● **Custom Audio Commands During Photo Shoot**

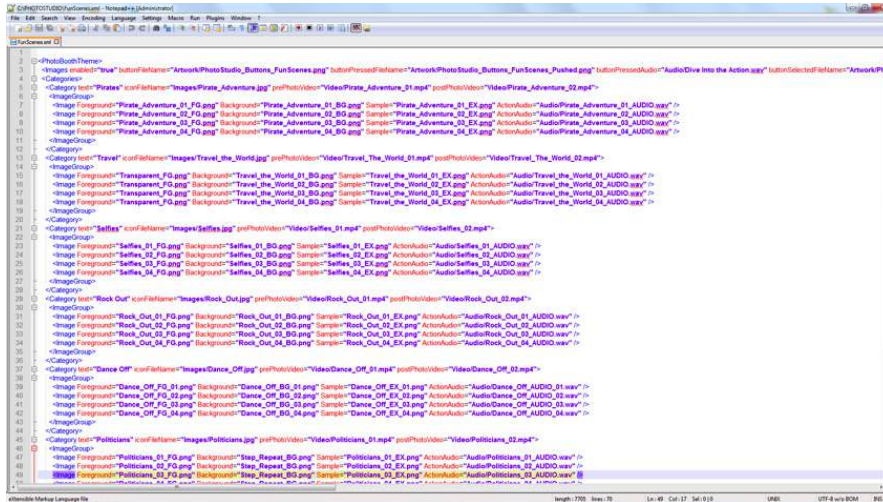
The Photo Studio allows an audio file to be played when each example image is shown before the camera captures the customers image. We recommend the audio file says exactly whats written on your example image to make the experience cohesive.

The audio requirements are as follows

	Scene Backgrounds
File Type	WAV
Filename	customsequencename_01-04 _AUDIO.png

● **Adding a Custom "Fun Scene" to the software**

1. Copy Custom Fun Scene PNG files onto a USB Flash Drive to Load into PhotoStudio.
2. Copy Custom Fun Scene JPG files onto a USB Flash Drive to Load into PhotoStudio.
3. Copy Custom Fun Scene WAV files onto a USB Flash Drive to Load into Photo Studio.
4. Copy Custom Fun Scene MP4 files onto a USB Flash Drive to Load into Photo Studio.
5. Connect a USB Keyboard & USB Mouse to any USB Ports of the PhotoStudio computer.
6. Connect USB Flash Drive with Custom Scenes into any USB Port of the PhotoStudio computer.
7. At any point while "attract mode" is playing, tap the six o'clock position on the monitor.
8. Hit ALT and F4 keys at the same time on the Keyboard to close the PhotoStudio Application.
9. Open Windows Explorer by Selecting Start->Computer.
10. Double Click location of your USB to Explore USB Flash Drive.
11. Copy all Custom Fun Scenes PNG files to C:\PHOTOSTUDIO\Images.
12. Copy all Custom Fun Scenes JPG files to C:\PHOTOSTUDIO\Images.
13. Copy all Custom Fun Scenes WAV files to C:\PHOTOSTUDIO\Audio.
14. Copy all Custom Fun Scenes MP4 files to C:\PHOTOSTUDIO\Video.
15. Open Notepad by Selecting Start->Type "Notepad++" into the search bar->Notepad++.
16. Open Fun Scenes Configuration File by choosing File->Open and open C:\PHOTOSTUDIO\FunScenes.xml.



- Each custom scene must be configured in groups of 4 images and 4 audio files within the ImageGroup tags. The following attributes are listed within each Image:
- Foreground – Image used for Foreground Layer.
- Background – Image used for Background Layer.
- Sample – Image used for Sample Image displayed right before taking the photo.
- ActionAudio – Audio used for telling the user how to pose for the picture.
- They must also include 2 video files and an icon image (MUST BE JPG) within the Category tag. The following attributes are listed within Category:
- text – Text that will be displayed on the icon image to tell user what the custom sequence is.
- iconFileName – location and name of the icon image displayed on scene selection screen. (Will always have the images part "Images\YOUR_FILE_NAME.jpg")
- prePhotoVideo – location and name of the pre video. (Will always have the video part "Video\YOUR_FILE_NAME.mp4")
- postPhotoVideo - location and name of the post video. (Will always have the video part "Video\YOUR_FILE_NAME.mp4")

```
<Category text="Pirates" iconFileName="Images\Pirate_Adventure.jpg" prePhotoVideo="Video\Pirate_Adventure_01.mp4" postPhotoVideo="Video\Pirate_Adventure_02.mp4">
  <ImageGroup>
    <Image Foreground="Pirate_Adventure_01_FG.png" Background="Pirate_Adventure_01_BG.png" Sample="Pirate_Adventure_01_EX.png" ActionAudio="Audio\Pirate_Adventure_01_AUDIO.wav" />
    <Image Foreground="Pirate_Adventure_02_FG.png" Background="Pirate_Adventure_02_BG.png" Sample="Pirate_Adventure_02_EX.png" ActionAudio="Audio\Pirate_Adventure_02_AUDIO.wav" />
    <Image Foreground="Pirate_Adventure_03_FG.png" Background="Pirate_Adventure_03_BG.png" Sample="Pirate_Adventure_03_EX.png" ActionAudio="Audio\Pirate_Adventure_03_AUDIO.wav" />
    <Image Foreground="Pirate_Adventure_04_FG.png" Background="Pirate_Adventure_04_BG.png" Sample="Pirate_Adventure_04_EX.png" ActionAudio="Audio\Pirate_Adventure_04_AUDIO.wav" />
  </ImageGroup>
</Category>
```

Example for the full Pirate Adventure Scene

- If your Scene does not call for a Foreground as you want it to be fully transparent, you must reference the Transparent_FG.png that we have available for use. Example:

```
<OverlayImage Foreground="Transparent_FG.png"
Background="Pirate_Adventure_01_BG.png" Sample="Pirate_
Adventure_01_EX.png" ActionAudio="Audio/Pirate_Adventure_01_
AUDIO.wav" />
```

NOTE: The first few lines MUST not be removed:

```
<PhotoBoothTheme>
```

```
<Images enabled="true" buttonFileName="Artwork/PhotoStudio_
Buttons_FunScenes.png" buttonPressedFileName="Artwork/
PhotoStudio_Buttons_FunScenes_Pushed.png"
buttonPressedAudio="Audio/Dive Into the Action.wav"
buttonSelectedFileName="Artwork/PhotoStudio_SceneSelection_
LocationCircle_FunScenes.png" buttonText="FUN
SCENES" panelFileName="Artwork/PhotoStudio_Panel_
FunScenes.png" confirmationPanelFileName="Artwork/
PhotoStudio_Panel_SequenceConfirmation_FunScenes.png"
selectionPanelFileName="Artwork/PhotoStudio_SceneSelection_
FunScenes.png" photoShootPanelFileName="Artwork/PhotoStudio_
Panel_PhotoShoot_FunScenes.png" lightColorName="Green" />
```

```
<Categories>
```

NOTE: The last few lines MUST not be removed:

```
</Categories>
```

```
</PhotoBoothTheme>
```

NOTE: If the proper formatting of this file is not maintained and filenames point to files not located on the Photo Studio, the Photo Studio Application will not start up properly until you fix any issues within this file or restore your Photo Studio using a Restore USB.

NOTE: Order DOES matter within the file, so if you would like to make your custom scene the first one displayed make sure it is the first one listed.

17. Save the file after you have made your modifications.
18. Disconnect the Keyboard, Mouse & USB Flash Drive.
19. Restart the Photo Studio.

4th Frame Logos

- **What Are They?**

The 4th Frame Logo is an operator loaded logo that will be placed on the PhotoStrip in the 4th Frame. When enabled and a PhotoStrip is selected by the customer, 3 images will be captured instead of the usual 4 images. The 4th image will be replaced with the Logo. The 4th Frame Logo is not placed over any image which is why it should not have any transparency. You can load up to four 4th frame logos.

	Scene Backgrounds
File Type	PNG
Color	RGB
Transparency Layer	NO
Resolution	1500 x 1000, Landscape
Filenames	photostrip.png photostrip2.png photostrip3.png photostrip4.png



Example of 4th Frame Logo

4th Frame Coupons (Promotions)

- **What Are They?**

The 4th Frame Coupon is an operator loaded coupon that will be placed on the PhotoStrip in the 4th Frame of the 2nd PhotoStrip. The 4th Frame Coupon shares the same specifications as the 4th Frame Logo with the exception that it is only printed on a single strip. If you have both a 4th Frame Logo and a 4th Frame Coupon enabled, each strip will have a different 4th Frame, one with the Logo and one with the Coupon. The 4th Frame Coupon is not placed over any image which is why it should not have any transparency. When a user shares their photo, the PhotoStrip Coupon will not be on the shared image. You can load up to four 4th frame coupons.

	Scene Backgrounds
File Type	PNG
Color	RGB
Transparency Layer	NO
Resolution	1500 x 1000, Landscape
Filename	photostrip_coupon.png photostrip_coupon2.png photostrip_coupon3.png photostrip_coupon4.png



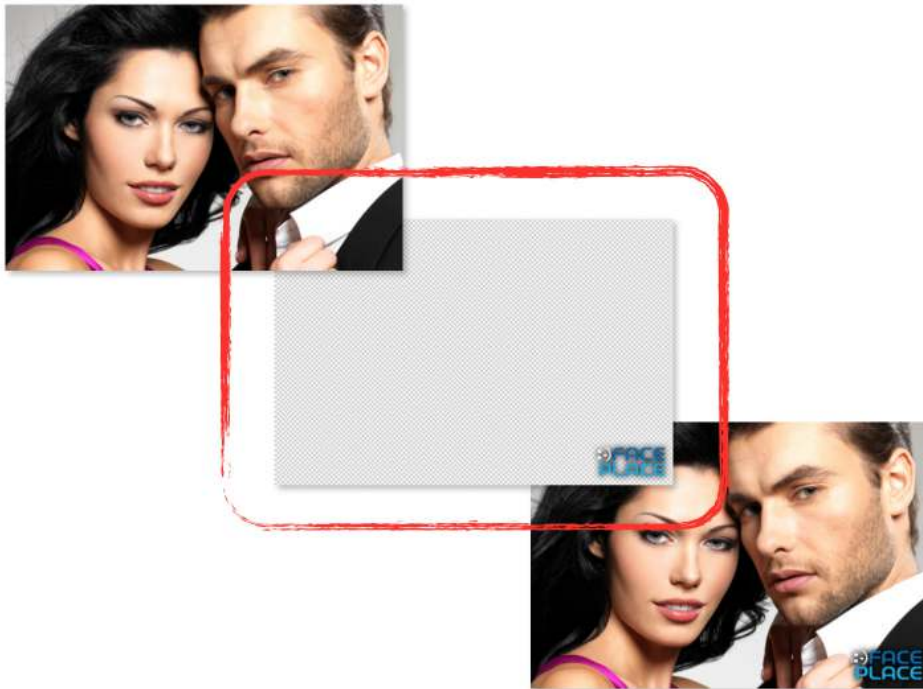
Example of 4th Frame Coupon

Watermarks

- **What Are They?**

The 4x6 Watermark is an operator loaded watermark, which is overlaid on a 4X6" or 6X9" Photo. It is important the logo is kept small, since it is overlaid directly on top of the photo. If it is too big, it will interfere with the aesthetics of the photo.

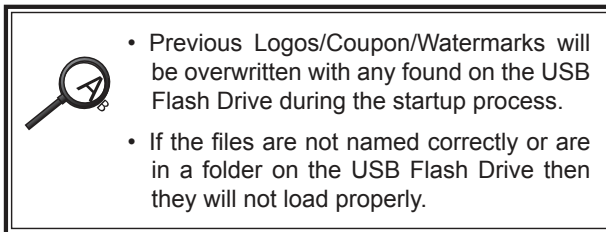
	Scene Backgrounds
File Type	PNG
Color	RGB
Transparency Layer	Include Alpha Channel
Resolution	1500 x 1000, Landscape
Filename	landscapewatermark.png



Watermarks

● **Loading custom 4th frame logos, 4th frame coupons & watermarks**

1. Copy Logo, Coupon & Watermark Files to the USB Flash Drive (not in a folder).
2. Access Configuration Mode.
3. Insert USB Flash Drive into PhotoBooth Computer USB Port and wait 15 seconds.
4. Exit Configuration Mode.
5. During the Program Startup Process, the application will load any found files and overwrite any that are currently on the PhotoBooth.
6. Remove USB Flash Drive if not using to save images after PhotoBooth Application has started.



Network Connectivity

Your Photo Studio comes pre-installed with a Pepwave Surf On-The-Go Router which will make it easy to get your Photo Studio, Internet Access using 1 of 3 different choices.

Important: Please follow these instructions step-by-step. If you are using a 4G/3G Wireless Broadband mode, please ensure it is listed as a Pepwave-supported device by visiting <http://www.peplink.com/technology/4g3g-modem-support/>

Wireless or Wired Internet Access

- ◇ Enables internet access through 4G/3G wireless broadband networks, existing WiFi, or Ethernet -based data services (Cable / DSL / Satellite).
- ◇ Supports most wireless data modems from the leading carriers (modem and service sold separately).
- ◇ Special Feature: Use WiFi as a Data Source.

• What are the Choices

1. **Wired** – A Wired Internet Connection requires an Ethernet Cable with Internet Access at the location to be run into the PhotoBooth and connected directly to the PhotoBooth computer. A Wired Internet Connection will be the most reliable of the three connection options and will be the easiest to install and configure.
2. **WiFi as WAN** - A WiFi Network available at the location can be used to provide Internet Access to the PhotoBooth. The reliability of this connection will depend on a number of factors including the Signal Strength of the WiFi Network.
3. **4G/3G Wireless Broadband** – A 4G/3G Wireless Broadband USB Modem (Air Card) can be used to provide Internet Access to the PhotoBooth. The reliability of this connection will depend on a number of factors including the Signal Strength of the Broadband Service chosen. To find a listing of all available 4G/3G Modems please visit the following site: <http://www.peplink.com/technology/4g3g-modem-support/> .

• Are you using a wired connection?

1. If you have chosen to go with a Wired Connection, you will need to bring an Internet Accessible Ethernet Cable into the PhotoBooth using one of the Pass-Through Holes on the Cabinet. (On some cabinets it may be necessary to drill a Pass-Through Hole if one is not available).
2. You will need to disconnect the Ethernet Cable that comes pre-installed between the Pepwave and the PhotoBooth computer from the computer.
3. Connect the Internet Accessible Ethernet Cable that you have at the location into the PhotoBooth computer.
4. Your PhotoBooth should now have Internet Access.

• **Are you using WIFI as WAN or a 4G/3G Wireless Broadband Connection?**

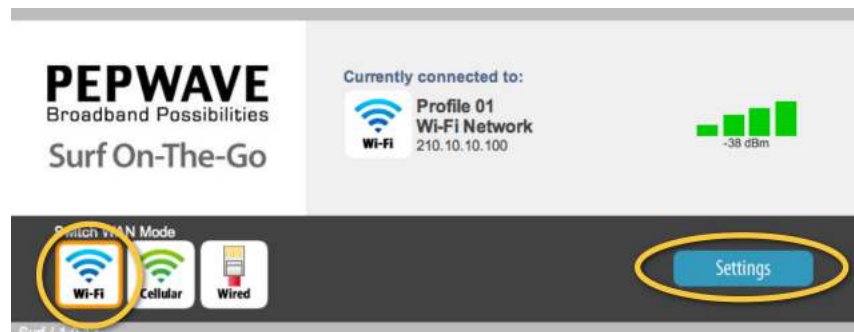
If you have chosen WiFi as WAN or 4G/3G Wireless Broadband Connection you will need to configure the Pepwave. Before getting started, if you are using WiFi as WAN, please ensure that you have the WiFi SSID and Password for the WiFi Network you will be connecting to. If you will be using a 4G/3G Wireless Broadband Modem, install the Modem into the USB Port of the Pepwave before continuing.

See Supported Cellular Modems at <http://www.peplink.com/technology/4g3g-modem-support/>

Step 1: Accesing the Router Dashboard

To access the Pepwave Administration Dashboard you will need to do the following:

1. Connect a Keyboard and USB Mouse to the Front USB Ports of the Photo Studio Computer.
2. At any point while "Attract Mode" is playing, Hit the Alt + F4 keys at the same time to close the application.
3. On the desktop Double-Click the Tools icon; in that folder select the Link for the Pepwave Administration Console.
4. An Internet Explorer Window will open displaying the Pepwave Home Page. Underneath the title there will be 3 icons.



5. Here you must select the type of connection you wish to make.
6. If using a Cellular Air Card, first, make sure that your Air Card is plugged into the USB slot on the Pepwave Device. Then select the icon labeled Cellular. After a few moments the screen should indicate that it is connected to your device. You now have Internet Access.
7. If using a Wi-Fi signal, Please make sure you have all the required information listed above. Now select the Wi-Fi icon.
8. Now enter the settings window. From there, scroll down until you see Wireless Network Name (SSID).

WiFi WAN Settings[?]	Connect to Any Open Mode AP	<input type="radio"/> Enable <input checked="" type="radio"/> Disable
	Profile Select	Profile 01
	Wireless Network Name (SSID)	Wi-Fi Network (MySSID) Refresh
	Authentication	WPA/WPA2-Personal (Open)
	Encryption Key	***** (emptykey) (at least 8 characters)
	Custom MAC	<input type="radio"/> Enable <input checked="" type="radio"/> Disable
	Custom MAC Address	: : : : : 0
	Loop Protection	<input type="radio"/> Enable <input checked="" type="radio"/> Disable

9. Next to the field you will see the word Refresh Highlighted in Yellow. Click on Refresh and a list of Networks will appear.
10. Select the Network you wish to connect to. If there is a password please enter it into the field titled "Encryption Key". If there is no password please continue to the bottom of the page where you can save your entry.
11. Once you hit the save button you will be brought back to the top of the page. From here you can hit the "Dashboard" tab to go back to the Home page. After a few minutes the Pepwave will verify your Wi-Fi connection. You now have Internet Access.

If you've successfully connected to the Surf, the Surf's LEDs will be lit as follows:

PWR – Solid green

RDY – Amber

ENET – Solid green

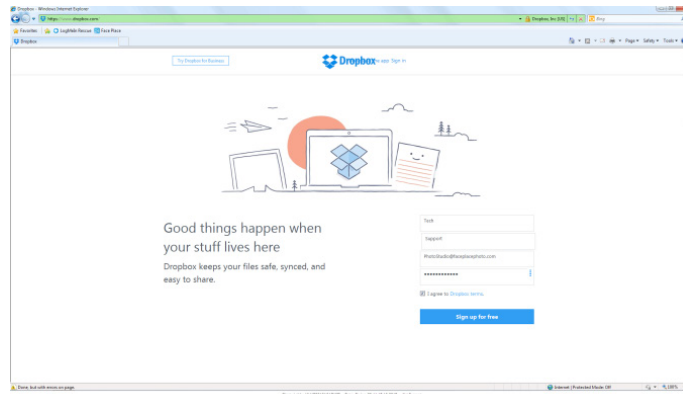
Wi-Fi – Displays a varying number of lit signal bars, depending on the strength of the received Wi-Fi signal

Dropbox Installation and Setup

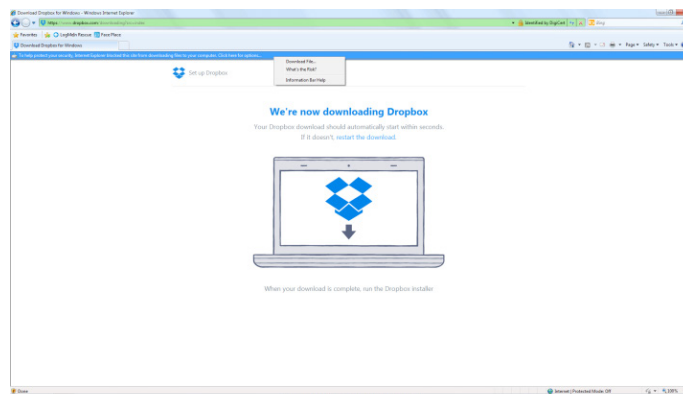
At any point while the "attract mode video" is playing, tap the six o'clock position on the monitor. Then hit the ALT and F4 keys at the same time on the Keyboard to close the PhotoStudio Application and bring you to the desktop.

Launch Internet Explorer and go to www.dropbox.com *(Please make sure your PhotoStudio is connected to the internet)

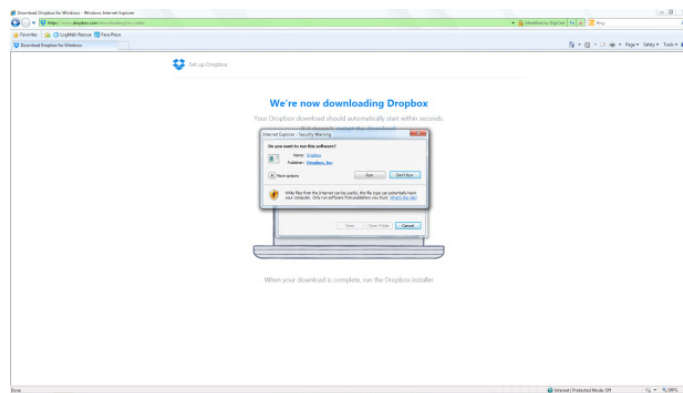
Once at www.dropbox.com fill in the information and click on the Blue "Sign Up for Free" button.



On the next page a yellow warning bar will appear at the top of the window, click on yellow bar and select "Download File"

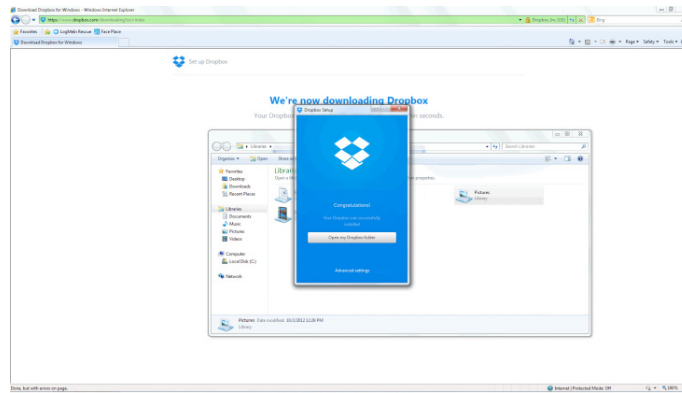


A gray box will appear, on the box select Run, and then select Run again on the second gray box that will appear.

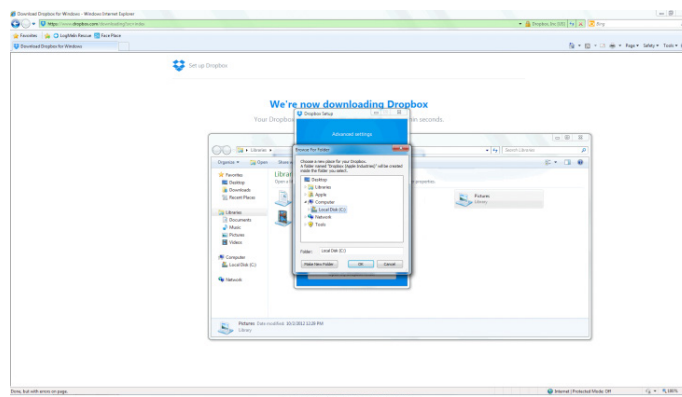


Wait for the install to complete.

On the new box that appears click on "Advanced Settings".



Where it says "Dropbox location" click on the white drop down box and select "other" in the new box that appears, select "Local Disk C:" and click ok.



Your DropBox is now complete and you may exit all windows and relaunch the PhotoStudio by double-clicking the "Launch PhotoStudio Icon on the desktop.

APPLE INDUSTRIES, INC. WARRANTY POLICY

All parts (except for light bulbs and cabinet wheels) are under Warranty against actual defects in material and workmanship under normal and customary use for a period of one year from the date of purchase. This Warranty does not include labor, unless the defect occurs Within 30 days of purchase. The customer is responsible for the inbound freight of items sent in for Warranty repair. The customer must call customer service for an RMA on all returns. There is no charge for utilizing our telephone technical assistance, which is available 8:00 am-5:00 pm EST Monday-Friday, except holidays.

Apple may, in its discretion, provide an advance exchange of parts under Warranty. In the event that an advance exchange of parts is provided by Apple, regular ground shipping (U.S. only) of the new parts will be provided by Apple, at no cost to the customer. Any special shipping requests are the responsibility of the customer. Shipping to return the defective parts is the sole responsibility of the customer. All such defective parts must be returned within 15 calendar days after receiving the new replacement parts. If the defective parts have not been returned by the customer within the 15 calendar days, or if any of the parts are deemed not defective or otherwise not under warranty, no credit will be issued, the advance replacement will be considered a final sale and Apple will charge customer's credit card accordingly. Apple may require customer's credit card as a condition to an advance exchange of parts.

This Warranty shall be null and void if the equipment has been tampered with or serviced by a person not authorized by Apple to perform the service.

ANY IMPLIED WARRANTIES, INCLUDING WITHOUT LIMITATION THE IMPLIED WARRANTIES OF MERCHANTABILITY AND FITNESS FOR A PARTICULAR PURPOSE, ARE EXPRESSLY DISCLAIMED. THIS EXPRESS LIMITED WARRANTY IS THE EXCLUSIVE REMEDY OF THE CUSTOMER, AND IS PROVIDED IN LIEU OF ALL OTHER WARRANTIES, EXPRESS OR IMPLIED. IN NO EVENT SHALL APPLE OR ANY OF ITS RELATED COMPANIES BE LIABLE, WHETHER IN CONTRACT OR TORT (INCLUDING NEGLIGENCE) FOR DAMAGES IN EXCESS OF THE PURCHASE PRICE OF THE PRODUCT, OR FOR ANY INDIRECT, INCIDENTAL, SPECIAL OR CONSEQUENTIAL DAMAGES OF ANY KIND, OR LOSS OF REVENUE OR PROFITS.

IMPORTANT SAFETY WARNING

Disclaimer: Apple Industries/Face Place shall not be liable or responsible for any damages resulting from the handling, use or operation of its photo booths. With your purchase, the buyer confirms that you have read and understand the following warnings and you agree that you are responsible for all damages and injuries caused by the handling, operation or use of the photo booths, which include any personal injuries. The Face Place Deluxe: Theme Park Edition photo booth is designed as a weather resistant photo booth capable of being left outdoors under normal weather conditions. It is not designed for nor shall it be used during inclement weather events including rain, high winds, thunderstorms, snow, extreme heats (in excess of 100 degrees Fahrenheit), or cold (below 50 degrees Fahrenheit). If such inclement weather conditions occur, the photo booth's operation should cease immediately and the photo booth should be thoroughly inspected prior to resuming operation.